



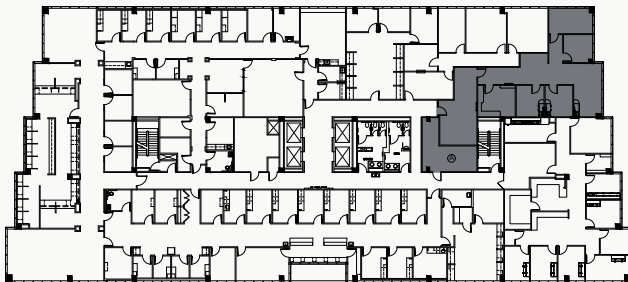
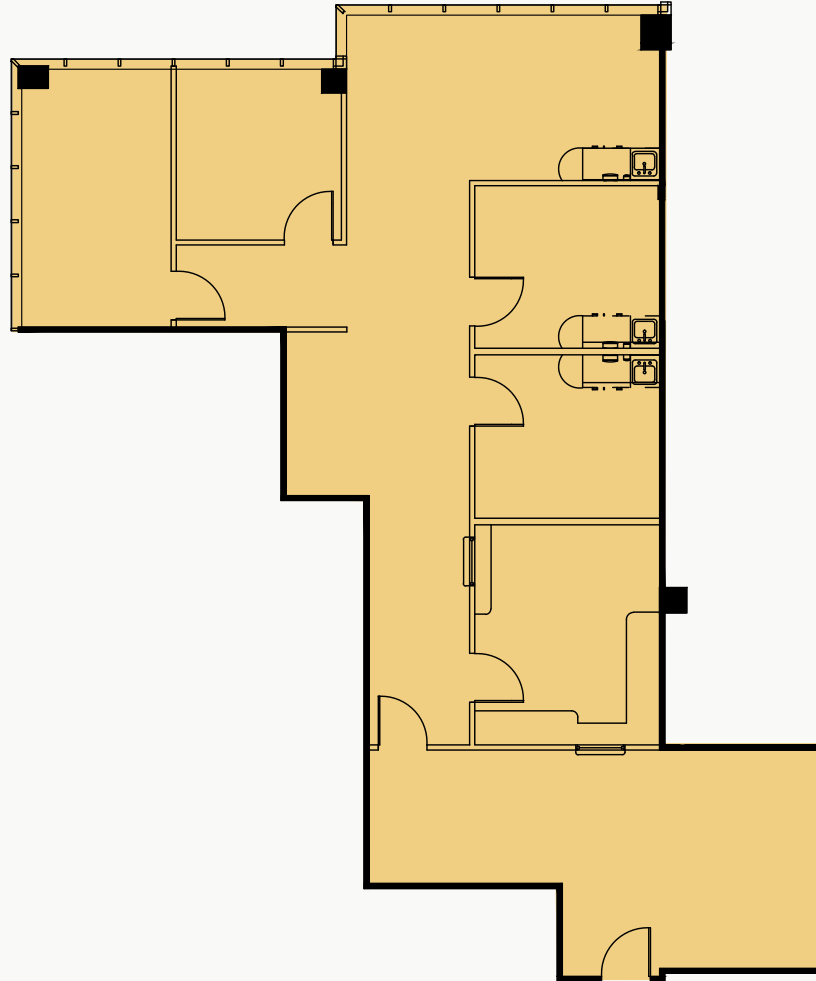
BELLAIRE
PARK

6565

SUITE 610

1,862 RSF

MEDICAL SPEC SUITE
RECEPTION
OPEN BREAK
2 EXAM ROOMS
2 PRIVATE OFFICES



SCAN TO PREVIEW

MEDICAL LEASING: 713.231.1588
OFFICE LEASING: 713.270.7700

 **TRANSWESTERN**[®]


PACIFIC OAK
Köppel Pacific Oak US REIT



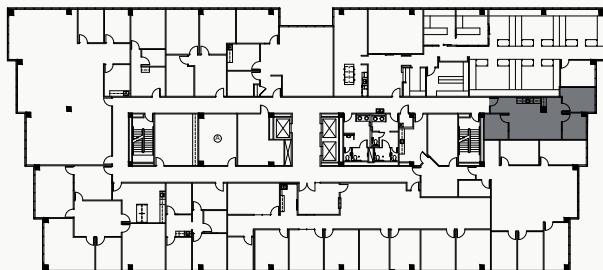
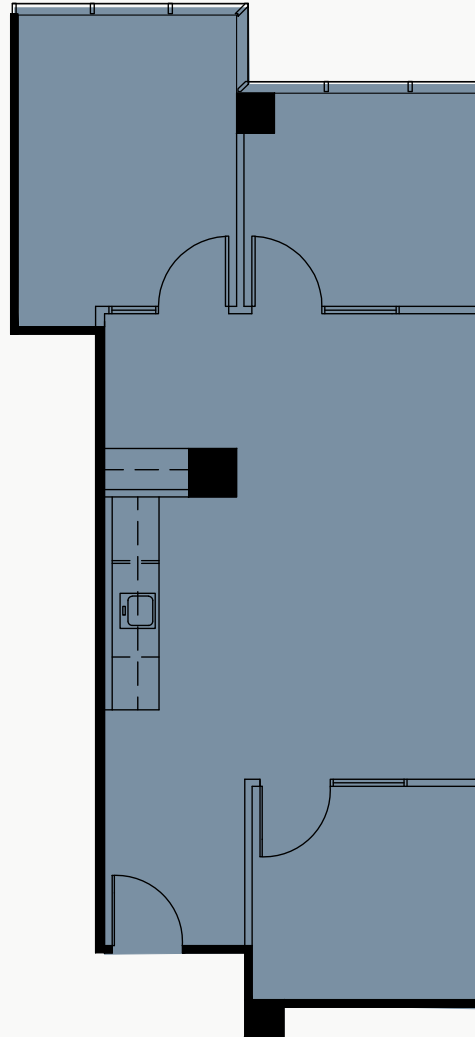
BELLAIRE
PARK

6575

SUITE 670

1,376 RSF

OFFICE SPEC SUITE
OPEN BREAK
3 PRIVATE OFFICES



MEDICAL LEASING: 713.231.1588
OFFICE LEASING: 713.270.7700

